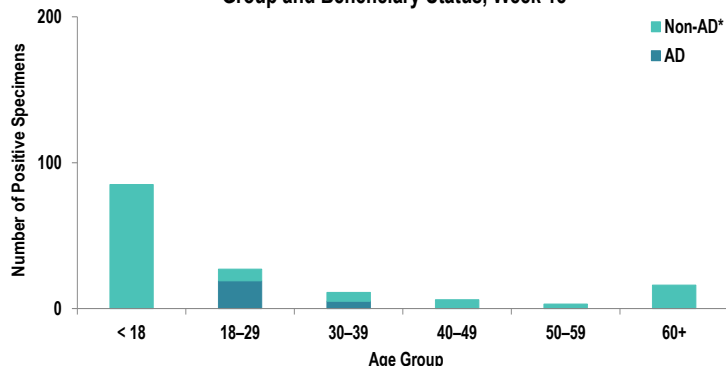


SUMMARY

Influenza activity in the Army population is low. Three influenza-associated hospitalizations were reported during Week 18; the cases were two vaccinated active duty (AD) service members (SMs) and one unvaccinated non-AD individual. The season total thus far is 175 hospitalizations; an average of 195 hospitalizations occurred in the same time period during the 2018-2023 seasons. Nationwide, influenza activity continues to decrease, with 2.4% of specimens tested by clinical laboratories being positive for influenza A or B, according to the Centers for Disease Control and Prevention (CDC). This is the final report for the 2023-2024 influenza season.

DEMOGRAPHICS

Positive Respiratory Specimen Results from Army MTFs by Age Group and Beneficiary Status, Week 18



AD: Twenty-four positive respiratory specimens were collected from AD SMs during Week 18; 79.2% (n=19) of the positive specimens were collected from SMs 18 – 29 years of age.

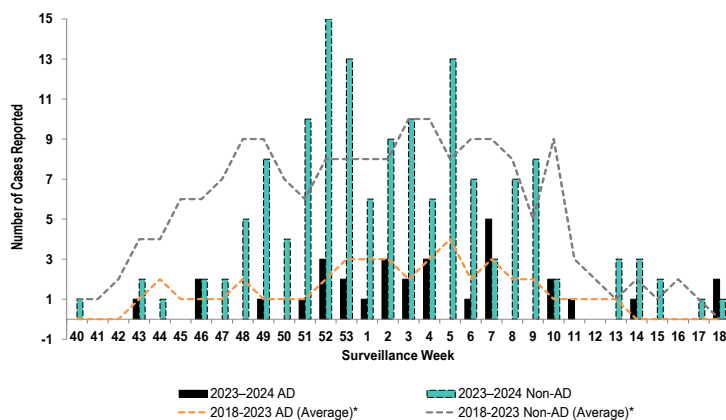
Non-AD: One hundred and twenty-four positive respiratory specimens were collected from non-AD individuals during Week 18; 68.5% (n=85) of the positive specimens were collected from individuals under 18 years of age.

*Non-AD=All individuals that are not active duty service members.

The age and beneficiary status of some cases were not available. Therefore, all calculations involving these variables were conducted using only available data. Differences in total results, and age- and beneficiary status-specific results may be noted throughout the report.

INFLUENZA-ASSOCIATED HOSPITALIZATIONS

Army Influenza-Associated Hospitalizations Reported in DRSi by Onset Week



Three influenza-associated hospitalizations with an onset date in Week 18 were reported to the Disease Reporting System internet (DRSi). The season total thus far is 175 hospitalizations. The Week 18 average during the 2018 – 2023 seasons was zero hospitalizations (with an average of 195 hospitalizations reported from the start of the season through Week 18).

The DRSi does not capture cases older than 65 years old for influenza-associated hospitalizations.

*Data from the 2020–2021 and 2021–2022 influenza seasons are not included in comparison calculations due to the unusually low incidence of influenza.

Data are preliminary and subject to change.

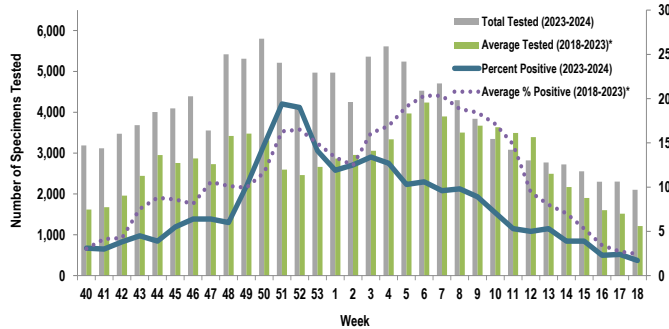
Disclaimer: The mention of any non-federal entity and/or its products is for informational purposes only, and not to be construed or interpreted, in any manner, as federal endorsement of that non-federal entity or its products.

Questions?
Email [DCPH-A DEP](mailto:DCPH-A@DEP)

INFLUENZA A ACTIVITY - ARMY

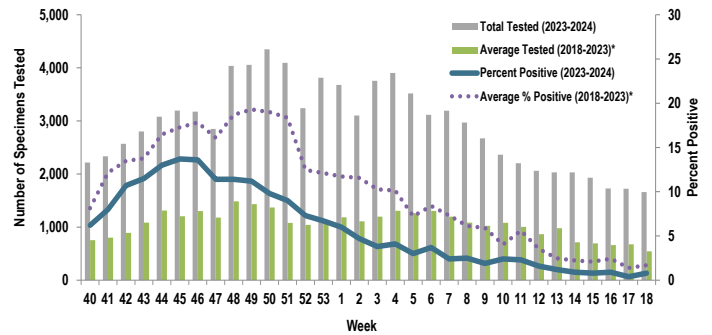
RSV ACTIVITY - ARMY

Proportion of Positive Influenza A Specimens for U.S. Army, 2023-2024



Of the 2,101 specimens tested for influenza A during Week 18, 1.7% (n=36) were positive. Influenza A activity is low.

Proportion of Positive RSV Specimens for U.S. Army, 2023-2024



Of the 1,660 specimens tested for RSV during Week 18, 0.8% (n=14) were positive. RSV activity is low.

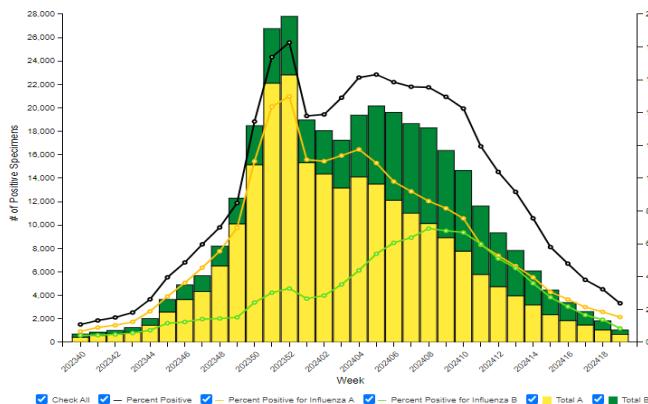
*Data from the 2020-2021 and 2021-2022 influenza seasons are not included in comparison calculations due to the unusually low incidence of influenza.

		Week 15	Week 16	Week 17	Week 18	Season Total
Army MTF Laboratory Results, 2023-24	Adenovirus	21	17	12	7	423
	Enterovirus	49	66	51	51	1,487
	Influenza A	100	54	56	36	11,428
	Influenza B	64	47	41	22	5,051
	Parainfluenza	33	28	39	19	552
	RSV	15	15	7	14	6,039
	Negative	2,336	2,143	2,157	1,998	104,151
	Total	2,618	2,370	2,363	2,147	129,131

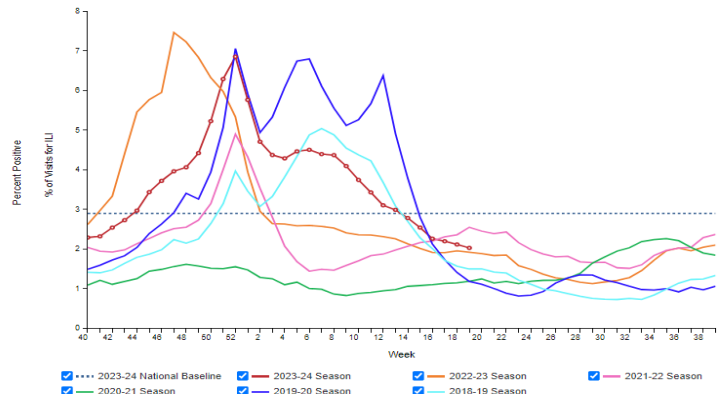
Of the 2,147 specimens tested during Week 18, 6.9% (n=149) were positive for any type of respiratory illness. Enterovirus accounted for 34.2% (n=51), influenza A accounted for 24.2% (n=36), influenza B accounted for 14.8% (n=22), parainfluenza accounted for 12.8% (n=19), RSV accounted for 9.4% (n=14), and adenovirus accounted for 4.7% (n=7) of the positive results. Additionally, the reported number of specimens tested decreased 9.1% from Week 17 to Week 18. Significantly more tests for influenza have been conducted this season compared to past seasons; 127,152 specimens have been tested for influenza A so far this season compared to the average of 89,821 specimens during the same time period in 2018-2023*.

INFLUENZA-LIKE ILLNESS (ILI) ACTIVITY - UNITED STATES

Influenza Positive Tests Reported to CDC by Clinical Laboratories, National Summary, 2023-24 Season, week ending May 11, 2024



Percentage of Outpatient Visits for Respiratory Illness Reported by The U.S. Outpatient Influenza-like Illness Surveillance Network (ILINet), Weekly National Summary, 2023-24 Season and Selected Previous Seasons

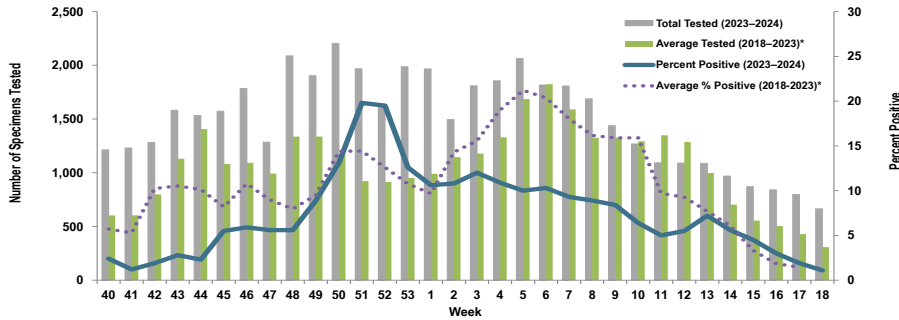


Nationwide in Week 18 (CDC's Week 19), incident ILI activity was 2.0%; this is below the national baseline of 2.9%. Additionally, a total of 44,071 specimens were tested for influenza by select clinical laboratories and submitted to the CDC; 1,048 (2.4%) were positive. Influenza A accounted for 64.5% (n=676) of the total positive specimens.

Locations providing Week 18 laboratory data as of 15 May 2024: Camp Zama, Carlisle Barracks, Ft. Belvoir, Ft. Bliss, Ft. Campbell, Ft. Cavazos, Ft. Carson, Ft. Drum, Ft. Eisenhower, Ft. Eustis, Ft. Gregg-Adams, Ft. Huachuca, Ft. Irwin, Ft. Jackson, Ft. Johnson, Ft. Knox, Ft. Leavenworth, Ft. Leonard Wood, Ft. Lewis, Ft. Liberty, Ft. Meade, Ft. Moore, Ft. Novosel, Ft. Riley, Ft. Sam Houston, Ft. Sill, Ft. Stewart, Ft. Wainwright, Korea, Landstuhl Regional Medical Center, Redstone Arsenal, Tripler Army Medical Center, the U.S. Military Academy at West Point, and Walter Reed National Military Medical Center.

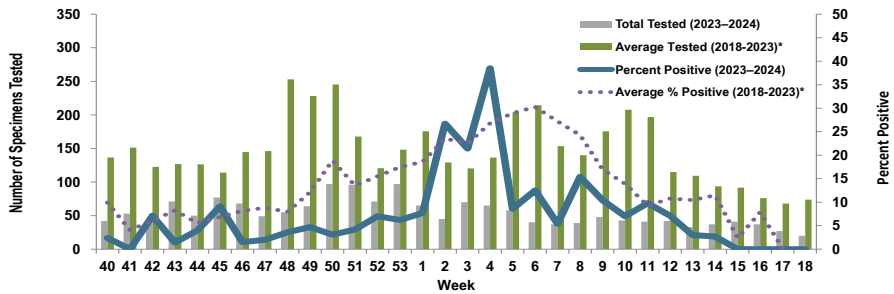
Proportion of Influenza A Positive Specimens by Week and Medical Readiness Command, 2023–2024 as Compared to 2018–2023*

Medical Readiness Command - East



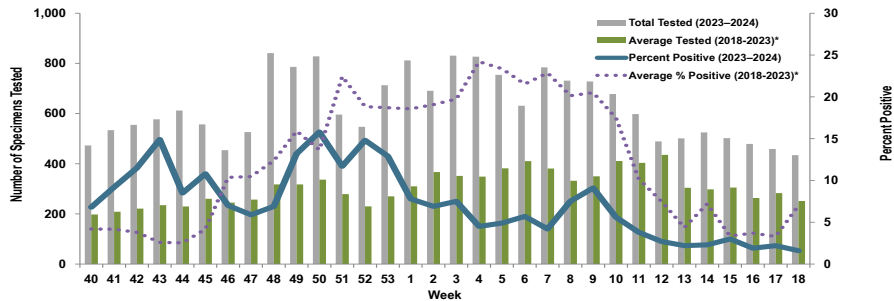
Week 18			
Age Group	AD	Non-AD	Season Total
< 18	0	3	1,328
18–29	1	0	945
30–39	0	1	632
40–49	0	1	406
50–59	0	1	311
60+	0	0	359
Total	1	6	3,981

Medical Readiness Command - Europe (Landstuhl Regional Medical Center)



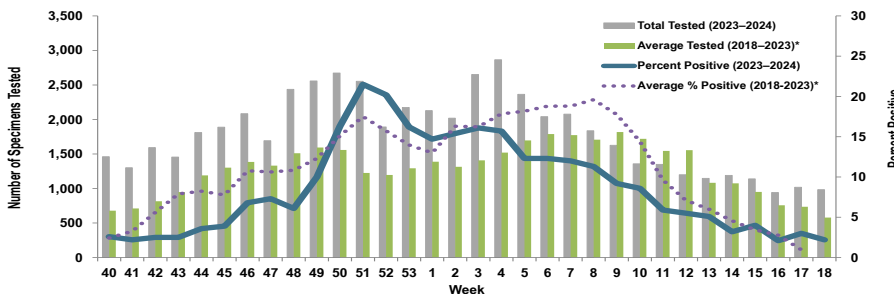
Week 18			
Age Group	AD	Non-AD	Season Total
< 18	0	0	47
18–29	0	0	24
30–39	0	0	25
40–49	0	0	17
50–59	0	0	11
60+	0	0	7
Total	0	0	131

Medical Readiness Command - Pacific



Week 18			
Age Group	AD	Non-AD	Season Total
< 18	0	1	397
18–29	3	1	541
30–39	0	0	277
40–49	0	0	109
50–59	0	0	67
60+	0	2	125
Total	3	4	1,516

Medical Readiness Command - West



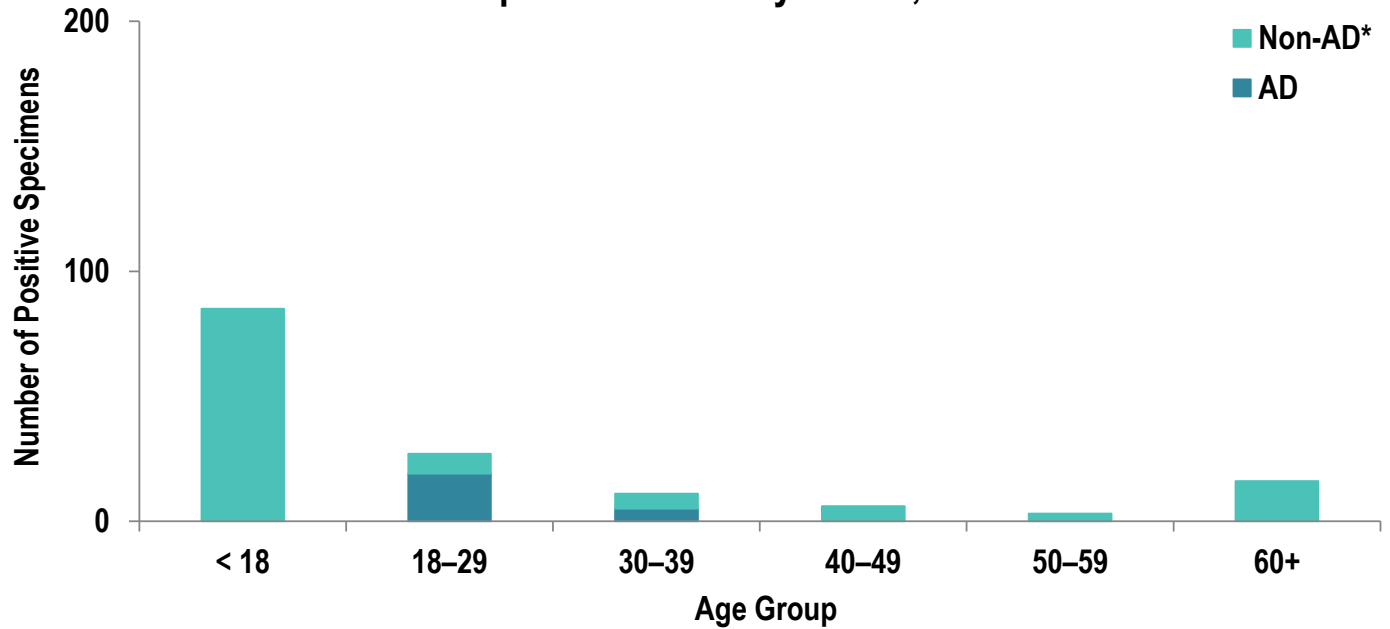
Week 18			
Age Group	AD	Non-AD	Season Total
< 18	0	6	2,027
18–29	8	1	1,499
30–39	2	2	915
40–49	0	1	521
50–59	0	1	385
60+	0	1	448
Total	10	12	5,795

*2018–2019, 2019–2020, and 2022–2023 influenza seasons. Data from the 2020–2021 and 2021–2022 influenza seasons are not included in comparison calculations due to the unusually low incidence of influenza.

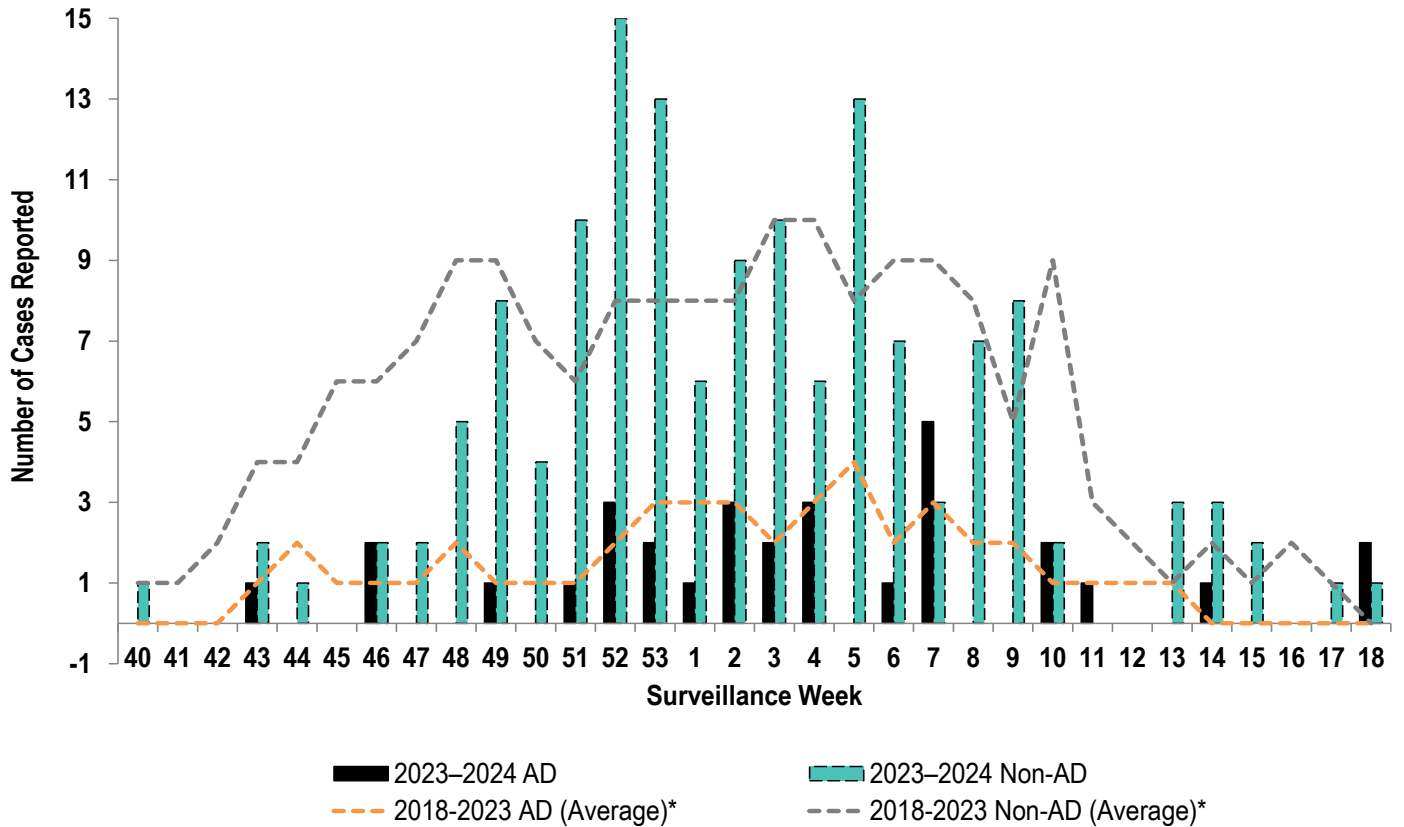
Number of Positive Influenza A Specimens by Region and Duty Status

Region	Week 15		Week 16		Week 17		Week 18	
	AD	Non-AD	AD	Non-AD	AD	Non-AD	AD	Non-AD
MRC-East	16	23	8	17	4	11	1	6
MRC-Europe	0	0	0	0	0	0	0	0
MRC-Pacific	3	12	5	4	3	7	3	4
MRC-West	12	34	8	12	10	21	10	12

Positive Respiratory Specimen Results from Army MTFs by Age Group and Beneficiary Status, Week 18

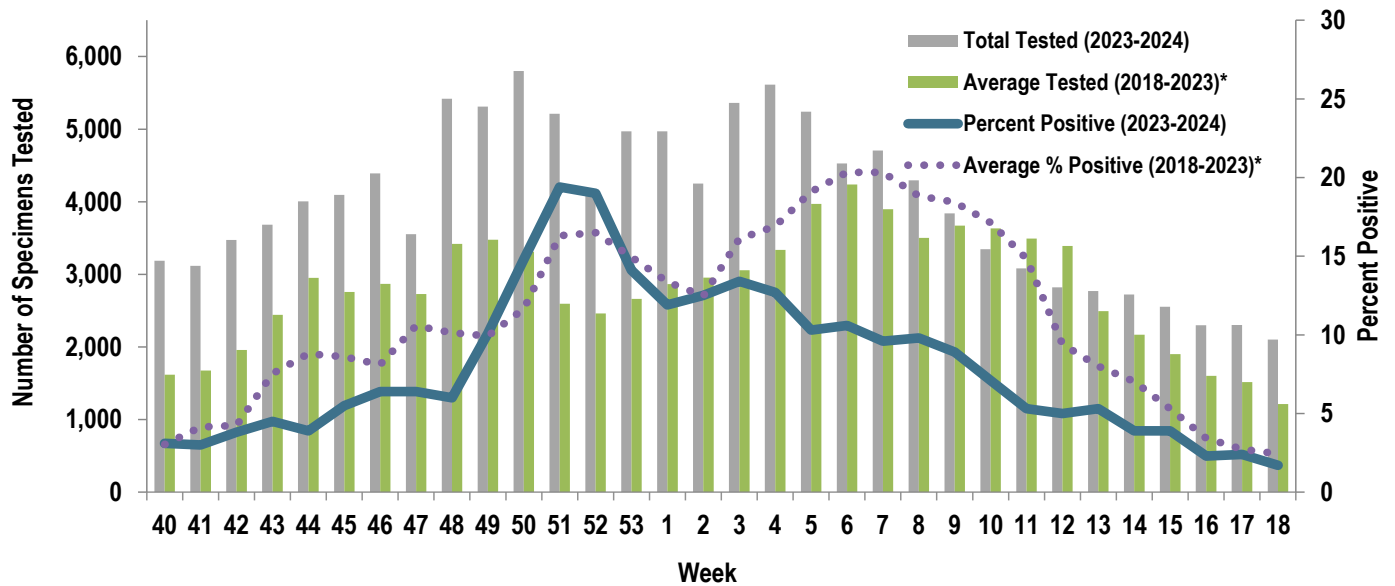


Army Influenza-Associated Hospitalizations Reported in DRSi by Onset Week



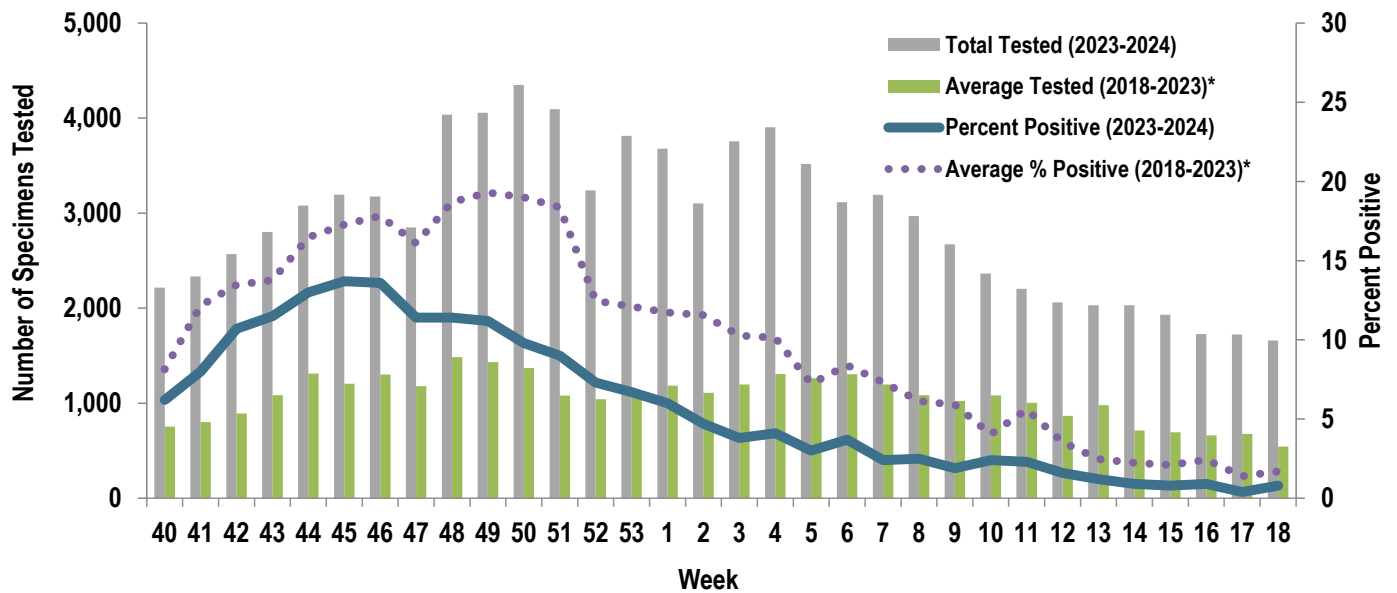
*2018-2019, 2019-2020, and 2022-2023 influenza seasons. Data from the 2020-2021 and 2021-2022 influenza seasons are not included in comparison calculations due to the unusually low incidence of influenza.

Proportion of Positive Influenza A Specimens for U.S. Army, 2023-2024



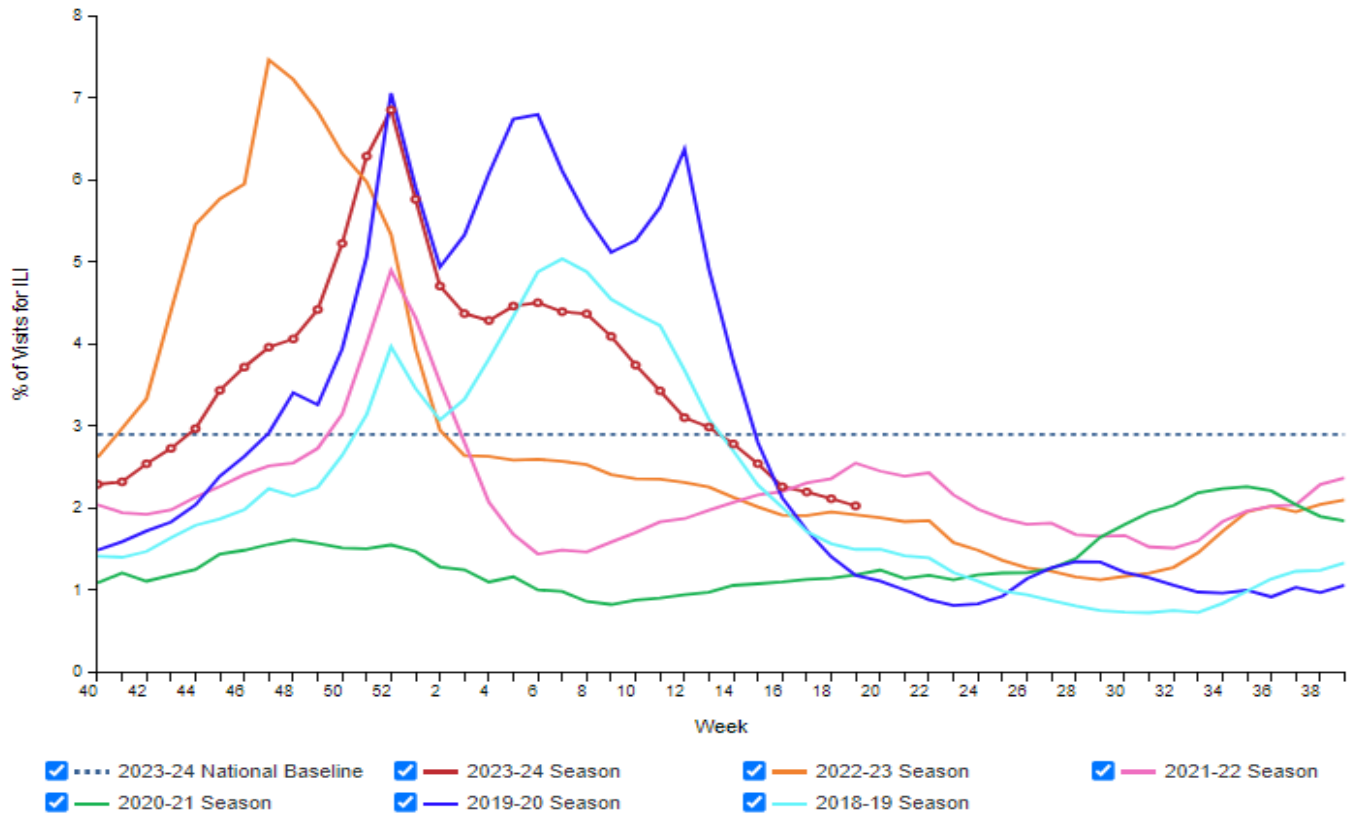
*2018–2019, 2019–2020, and 2022–2023 influenza seasons. Data from the 2020–2021 and 2021–2022 influenza seasons are not included in comparison calculations due to the unusually low incidence of influenza.

Proportion of Positive RSV Specimens for U.S. Army, 2023-2024



*2018–2019, 2019–2020, and 2022–2023 influenza seasons. Data from the 2020–2021 and 2021–2022 influenza seasons are not included in comparison calculations due to the unusually low incidence of influenza.

Percentage of Outpatient Visits for Respiratory Illness Reported by
The U.S. Outpatient Influenza-like Illness Surveillance Network (ILINet),
Weekly National Summary, 2023-24 Season and Selected Previous Seasons



Influenza Positive Tests Reported to CDC by Clinical Laboratories,
National Summary, 2023-24 Season, week ending May 11, 2024

